

### Surrey

Surrey is bounded by 0 Avenue to the south, 196 Street to the east, the Fraser River to the north, and 120 Street and the coastline to the west (excludes White Rock)

The Surrey Public Library has 9 locations.



### Population

#### Total Population and Projection

	Surrey		% Distribution—2011		% Distribution—2021	
	Male	Female	Surrey	Metro Van	Surrey	Metro Van
<b>All ages</b>	231,570	236,685	100.0	100.0	100.0	100
<b>0 - 14</b>	45,885	42,855	19.0	15.3	16.6	14.5
<b>15 - 24</b>	32,980	31,240	13.7	13.2	11.5	10.5
<b>25 - 44</b>	63,985	68,370	28.3	29.0	27.7	30.5
<b>45 - 64</b>	62,645	63,720	27.0	29.0	26.4	27.5
<b>65 +</b>	26,070	30,500	12.1	13.5	17.8	17.1

- In 2011, Surrey had a total **population of 468,251 people**; an increase of 18.6% from 2006, compared to Metro Vancouver's growth rate at 9.3%
- Surrey's seniors population (65+) will increase notably over the next 10 years. By 2021, Surrey's seniors' population is projected to grow to 17.8% of it's total population.

#### Immigrants by Period of Immigration

	Surrey		METRO VAN	
	#	%	#	%
<b>Total Immigrants</b>	150,190	100	831,265	100
Before 1961	10,000	6.7	64,007	7.7
1961 to 1970	10,240	6.8	68,995	8.3
1971 to 1980	21,035	14.0	119,702	14.4
1981 to 1990	26,950	17.9	136,327	16.4
1991 to 2000	52,625	35.0	290,943	35
2001 to 2006	29,200	19.4	151,290	18.2

In 2006, there were 150,190 immigrants living in Surrey. Surrey's recent immigrants comprised 19.4 of its total immigrant population, compared to Metro Vancouver's rate of 18.2%.

#### Immigration Trends - 1996 - 2011

	Surrey		Metro Van	
	Total Pop	Immigrants	Total Pop	Immigrants
		Number	% of Total Pop	% of Total Pop
1996	304,477	89,975	29.6	34.6
2001	347,820	114,730	33.0	37.2
2006	394,976	150,230	38.0	39.3
2011	468,231	--	-	-

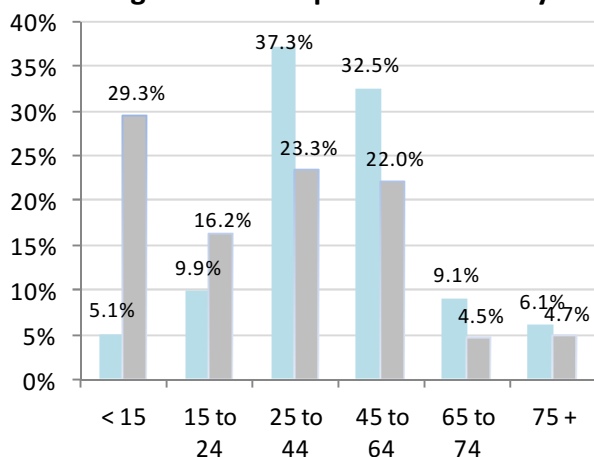
By 2006, the immigrant population in Surrey **had increased by 67%** since 1996 compared to 23.9% for BC as a whole.

### Population by Gender: Immigrants vs. Canadian Born (Census 2006)

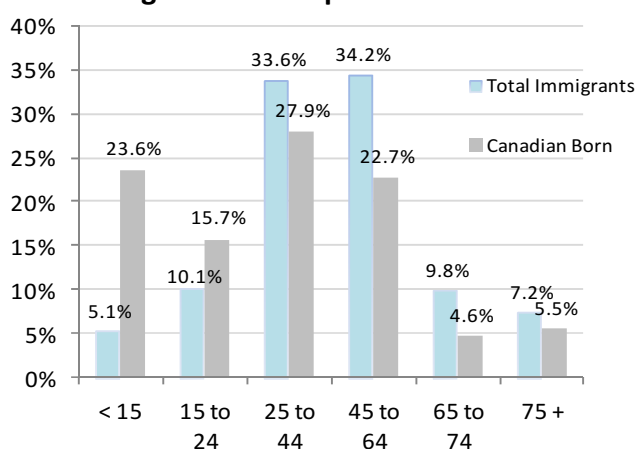
Total immigrants	Total	Male	Female	Total Canadian Born	Total	Male	Female
Number	150,230	72,430	77,805	Number	238,620	119,670	118,945
Percentage	100	48.2	51.8	Percentage	100	50.2	49.8

### Age Distribution: Immigrants vs. Canadian Born (Census 2006)

Percentage of Total Population in Surrey



Percentage of Total Population in Metro Van



In 2006, Surrey had a notably higher percentage of working age immigrants (age 25—64), at 69.8% of its total immigrant population, compared to 45.3% of its Canadian born population.

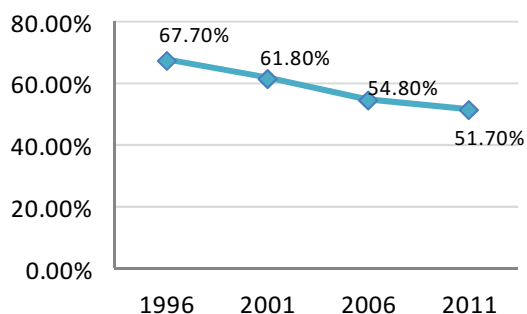
### Immigrant Population by Place of Birth (Census 2006)

#### Immigrants' Top 10 Places of Origin - by total immigrant population (Census 2006) - 20% sample data

Surrey	#	%	Metro Vancouver	#	%
Total immigrants	150,235	100.0%	Total immigrants	831,265	100.
India	52,640	35.0%	China, People's Republic of	137,245	16.5
Philippines	12,635	8.4%	India	90,090	10.8
United Kingdom	11,110	7.4%	Hong Kong,	75,775	9.1
Fiji	8,585	5.7%	United Kingdom	63,935	7.7
Korea, South	5,725	3.8%	Philippines	62,960	7.6
China, People's Republic of	5,220	3.5%	Taiwan	40,805	4.9
Viet Nam	5,075	3.4%	Korea, South	30,990	3.7
Taiwan	4,940	3.3%	United States of America	24,780	3.0
Pakistan	3,825	2.5%	Viet Nam	22,945	2.8
United States of America	3,430	2.3%	Iran	21,610	2.6
Other Countries	37,050	24.7%	Other Countries	260,130	31.3

### Language (Census 2011)

#### % of Population with English as a Mother Tongue (Total Population)



The percentage of people in Surrey whose mother tongue is English only has declined from 67.7% in 1996 to 51.7% in 2011.

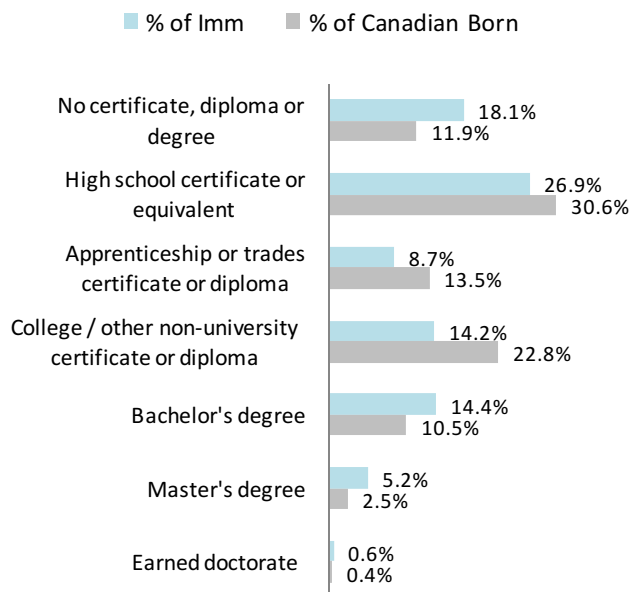
#### Languages Spoken Most Often at Home (Total Population)

Surrey	#	%
Total single responses	429,585	100.0
English	291,155	67.8
Punjabi (Punjabi)	73,620	17.1
Mandarin	8,575	2.0
Hindi	6,885	1.6
Tagalog (Pilipino, Filipino)	6,410	1.5
Korean	6,365	1.5
Others	36,575	8.5

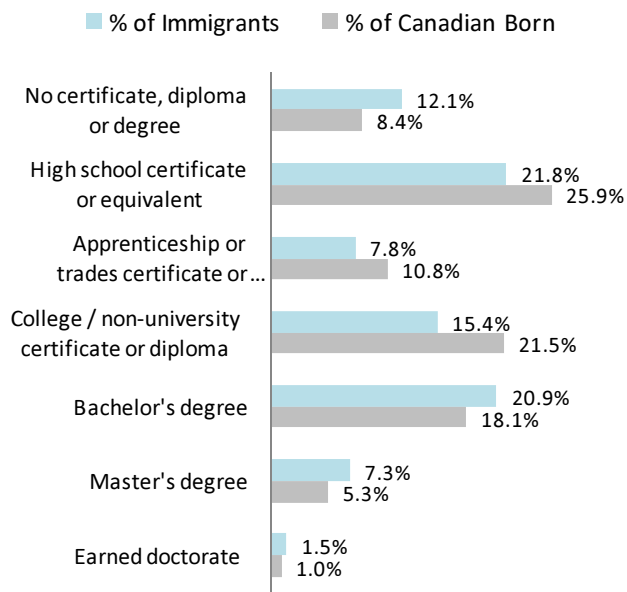
- In 2011, only 67.8% of Surrey's residents spoke English most often at home, compared to 72.6% for Metro Vancouver as a whole.
- In 2011, Punjabi ranked the first of the most common non-official home language, at 17.1%, followed by Mandarin at 2.0% and Hindi at 1.6%.

### Education (Census 2006)

#### Highest Level of Education: Surrey



#### Highest Level of Education: Metro Vancouver

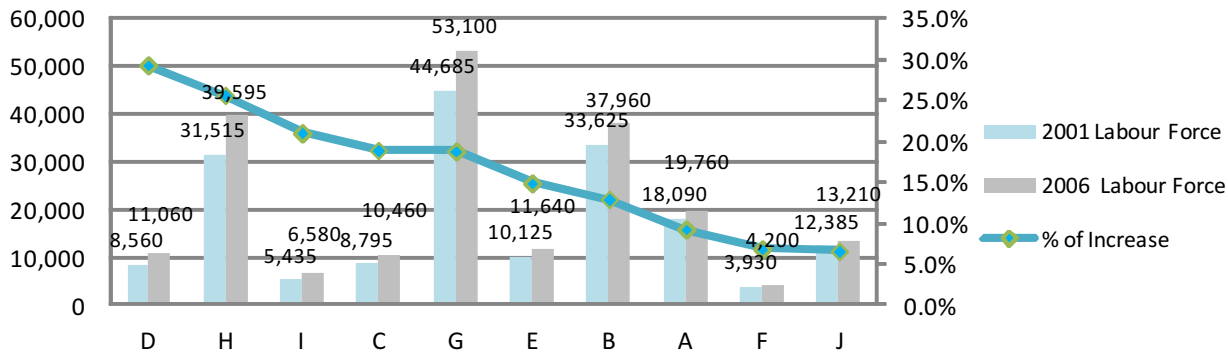


**Note:** Education level of immigrants / Canadian born aged 25 to 64 years

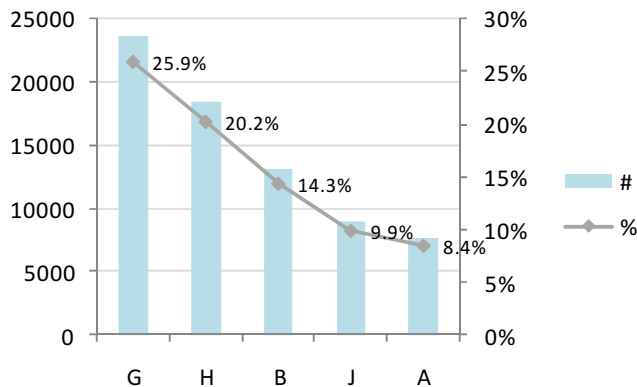
- In 2006, 20.2% of Surrey's immigrant population had a bachelor degree or above, compared to 13.4% of its Canadian born population.

### Occupations by Population (Census 2006)

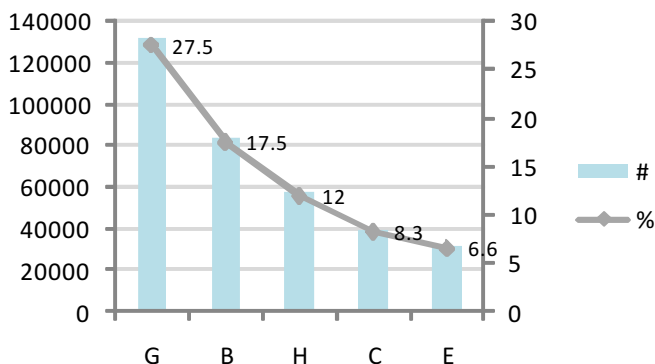
#### Occupational Growth by Total Population in Surrey: 2001-2006



#### Top 5 Occupations by Immigrant Population: Surrey



#### Top 5 Occupations by Immigrant Population: Metro Vancouver



#### All Occupations

- A Management occupations
- B Business, finance and administration occupations
- C Natural and applied sciences and related occupations
- D Health occupations
- E Occupations in social science, education, government service & religion
- F Occupations in art, culture, recreation and sport
- G Sales and service occupations
- H Trades, transport & equipment operators & related occupations
- I Occupations unique to primary industry
- J Occupations unique to processing, manufacturing and utilities

Note: The occupation definitions are adopted from Statistics Canada Census 2006

### Labour Force Activity and Income (Census 2006)

#### Percentage of the Total Labour Force

	Surrey		Metro Vancouver	
	Immigrants	% of Total Pop	Immigrants	% of Total Pop
Population 15 years & over (Pop)	142,565	45.6%	787,380	44.9%
In the labour force (LF)	92,725	44.0%	489,605	41.9%

#### Employment / unemployment rates in 2005

	Surrey		Metro Vancouver	
	Immigrants	Total Pop	Immigrants	Total Pop
Population 15 years & over (Pop)	142,565	312,875	787,380	1,752,385
In the labour force (LF)	92,725	210,935	489,605	1,169,720
Participation rate (LF/Pop)	65.0%	67.4%	62.2%	66.8%
Employment rate (Emp/Pop)	60.8%	63.6%	58.3%	63.0%
Unemployment rate (U/LF)	6.5%	5.7%	6.3%	5.6%

#### Median Income and Median Employment Income in 2005

	Surrey		Metro Vancouver	
	Immigrants	Total Pop	Immigrants	Total Pop
Population, 15+, with income	135,535	294,925	745,795	1,659,535
Total 2005 income (median)	\$20,456	\$23,983	\$20,488	\$25,032
Total 2005 income (average)	\$27,592	\$32,733	\$30,533	\$36,123
Employment income (2005)				
Worked full year, full time	42,980	107,815	231,650	596,495
Full year, full time (median)	\$35,707	\$40,402	\$38,090	\$43,215
Full year, full time (average)	\$41,641	\$48,705	\$47,921	\$53,995